

Conometric-retained prosthesis

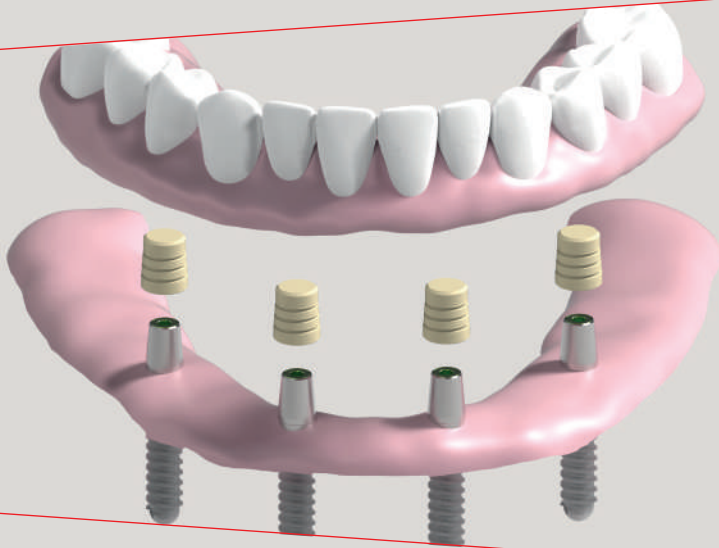
XCN[®]





MUA-Conic abutments for conometric-retained prosthesis

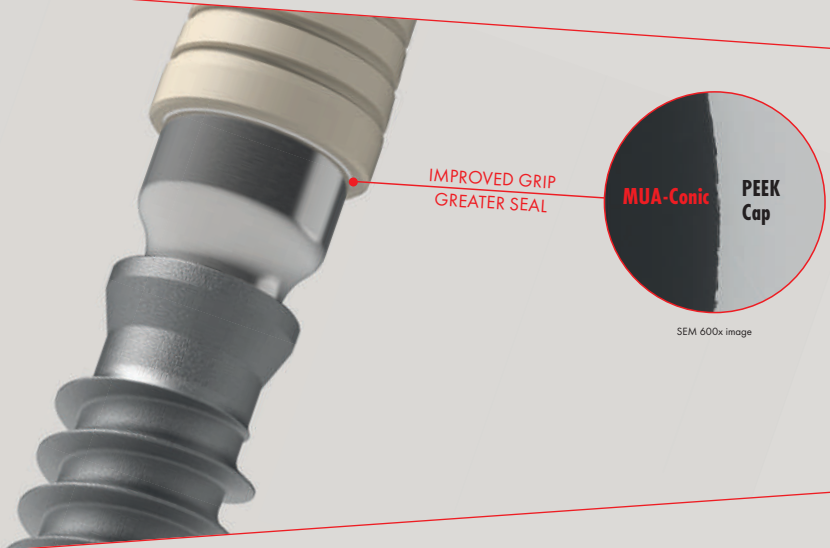
Conometric-retained prosthesis



ADVANTAGES

- Cement-free prosthesis thanks to extra-oral removal of excess cement
- Prosthesis without connection screws and access channels
- Easily removable dentures for periodic checks and oral hygiene
- High stability of the prosthesis thanks to conical friction
- Seal at interface for improved peri-implant soft tissue health

Innovative Titanium - PEEK interface

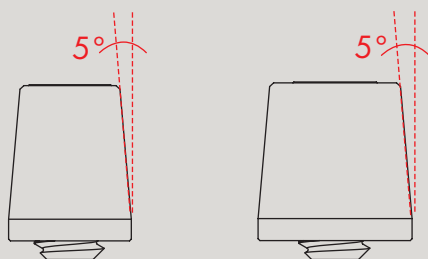


WHEN

- Partial edentulism (bridges in canine, premolar and molar area)
- Complete edentulism (fixed and removable prostheses)
- Immediate loading

Features

Tapered top with a half-angle of 5°



Wide range of angulations
(0° , 7.5° , 15° , 25° , 35°)
and gingival heights



Adaptable to any clinical situation thanks
to XCN® 360° connection



Reversibility of MUA-Conic in MUA
at any time during treatment, switching
from a conometric-retained prosthesis to a
screw-retained prosthesis



Preformed conometric caps

The system offers three different types of caps for three distinct uses: FIXED caps for fixed prosthesis, MOBILE caps for removable prosthesis and WELDING caps for intraoral welding techniques.

Fixed Cap



Mobile Cap

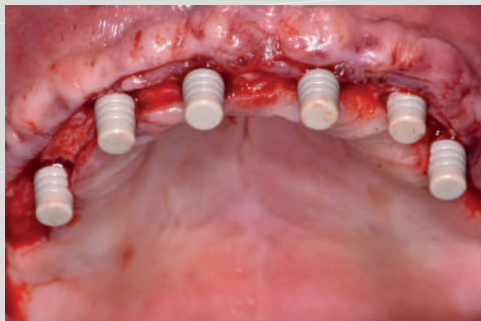
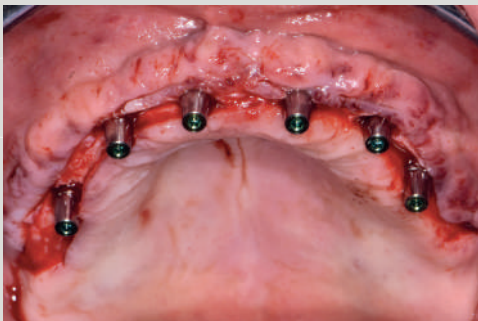
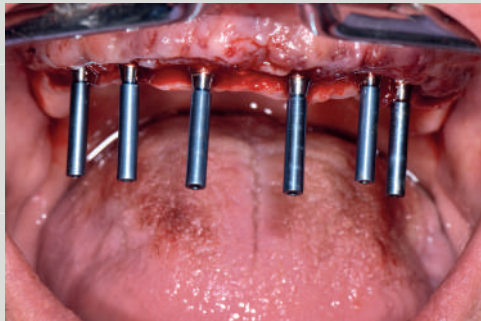
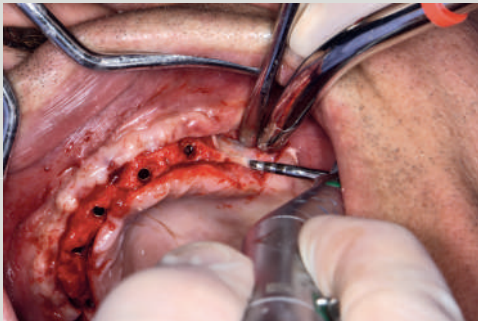


Welding Cap



Case Report

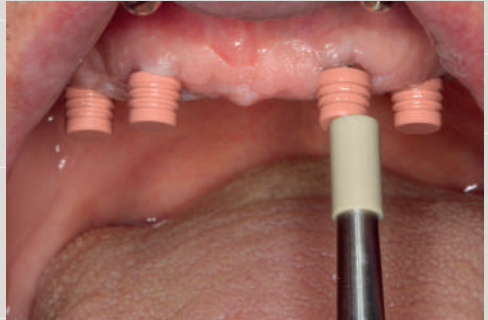
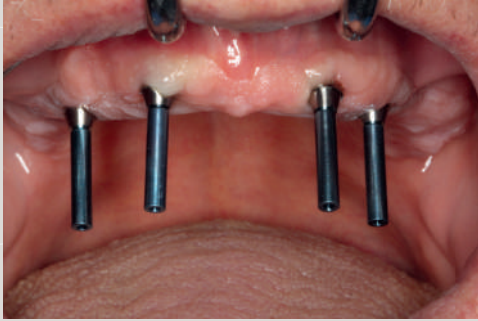
Fixed conometric prosthesis



Courtesy of Dr. Giuseppe Musiello
and DT Pasquale Martino

Case Report

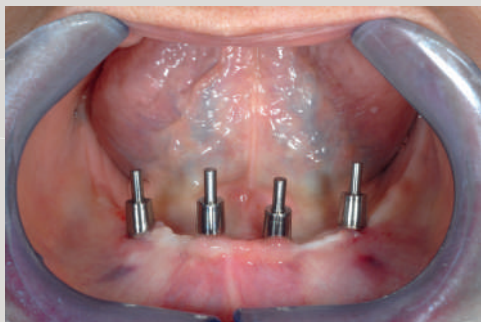
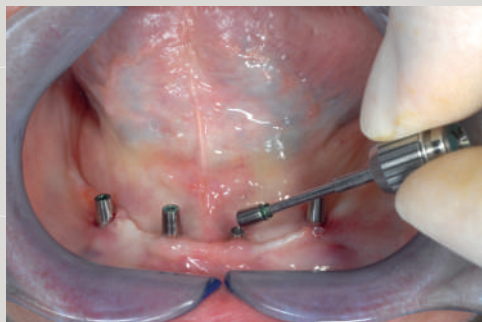
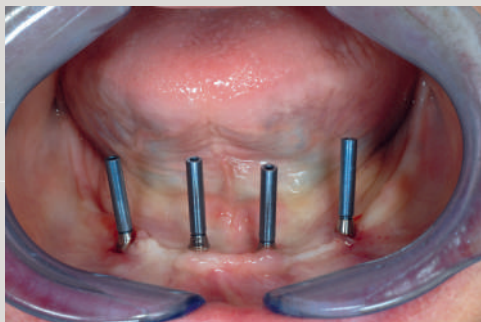
Conometric overdenture



Courtesy of Dr. Salvatore Belcastro
and Dental laboratory Monni & C.

Case Report

Welded conometric prosthesis



Courtesy of Dr. Umberto Stella
and DT Vaniei Fogli (Dental laboratory Eurodental)



SEE THE COMPLETE BIBLIOGRAPHY
ON THE WEBSITE

WWW.LEONE.IT



XCN[®]

FOR NATURAL SMILES ONLY



Leone S.p.a.

Via P. a Quaracchi 50

50019 Sesto Fiorentino | Firenze | Italy

Export Dept.:

Phone +39.055.3044600 | Fax+39.055.304405
export@leone.it | www.leone.it