

MUA  
Multi-Unit Abutment

**XCN<sup>®</sup>**





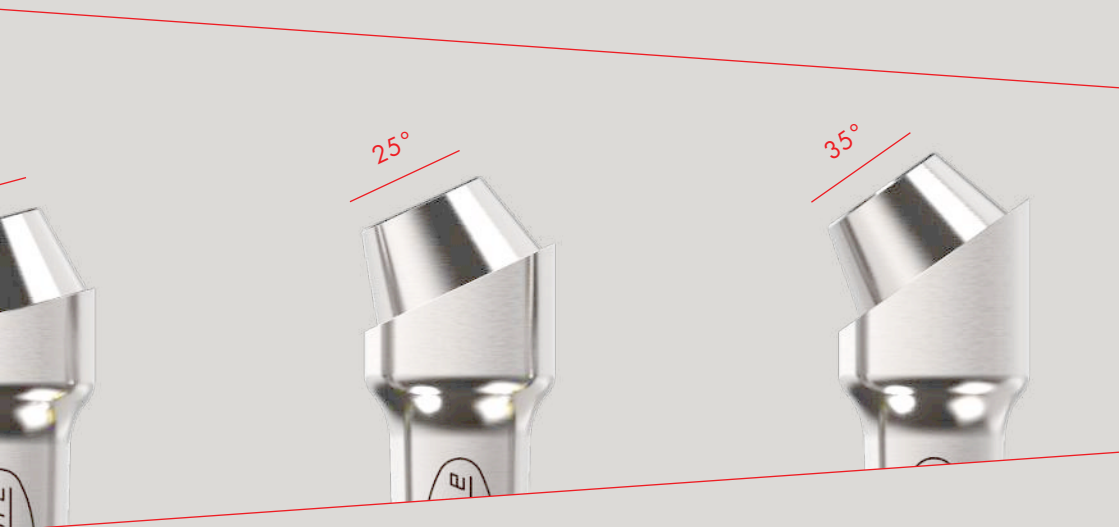
MUA  
for screw-retained  
prosthesis and accessories

# MUA (Multi-Unit Abutment)

Unique range in the market



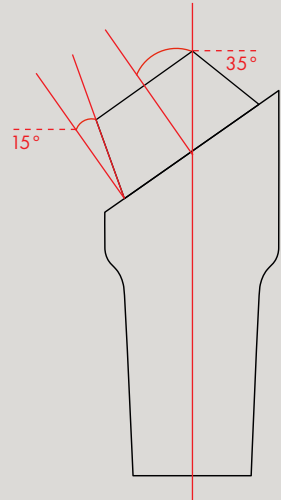
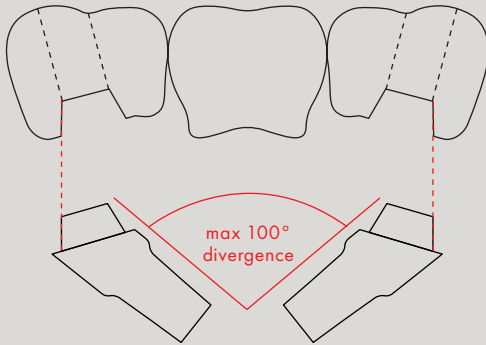
Only one screw to deal with, even with angled abutments,  
thanks to the Morse taper implant-abutment connection.  
Wide range of angulations and gingival heights.



## WHEN

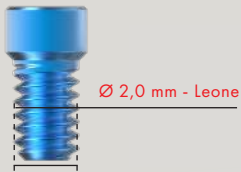
- Partial edentulism (bridges)
- Complete edentulism (full-arch and bar-retained overdenture)
- Immediate loading (All-on-Four)

# Features



- Ideal solution for all kinds of disparallelism, up to a maximum of 50°, due to various angulations and the tapered top

- M2.0 mm prosthetic screw, the strongest on the market



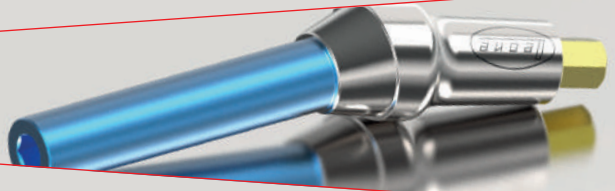
- Free positioning of the screw access channel thanks to XCN® 360° connection



- Full range also available for small diameter implants



- Supplied with pre-mounted multifunctional screw for easy positioning and parallelization



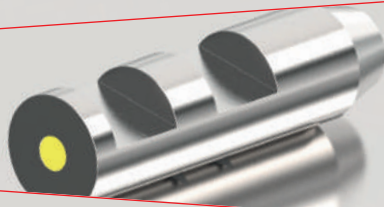
# MUA accessories

The system offers components specifically designed for the various prosthetic techniques, from impression taking to final passivation, both for conventional and digital prosthetic workflows.

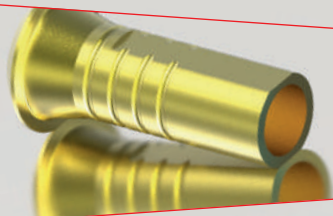
Healing screws, standard and slim



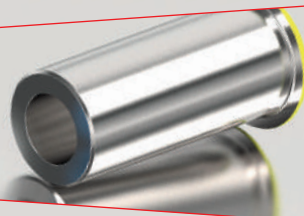
Repositionable and Pick-Up transfers



MUA Analogs



Bonding Cylinders with burn-out coping



Welding Cylinders





MUA Scan Body

MUA Digital analogs



CAD-CAM interfaces

# MUA PLUS

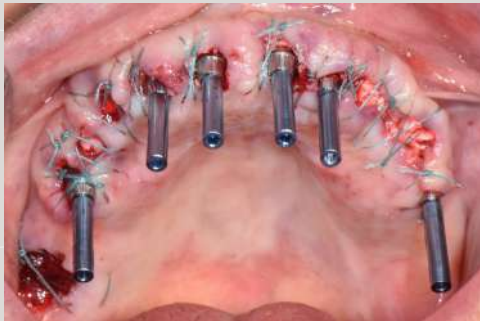
Prosthetic line also available sterile.



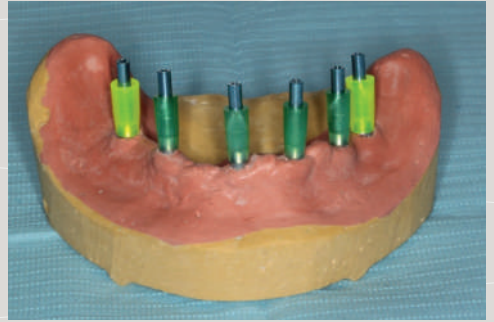
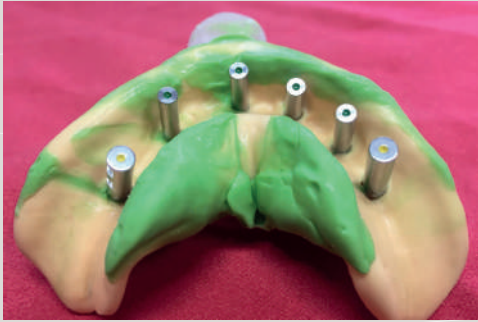
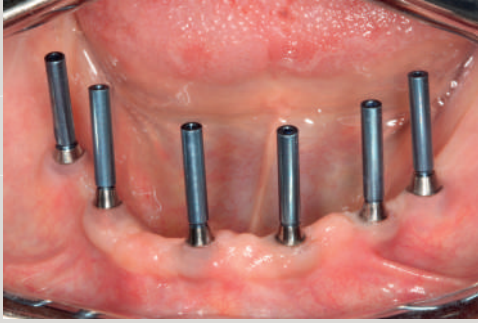
**STERILE R**

# Case Report

Ideal for immediate loading, also with All-on-Four technique.



Courtesy of Dr. Fabrizio Dell'Innocenti  
and Mr. Massimiliano Pisa (Laboratorio Dental Giglio)



Courtesy of Dr. Dr. Salvatore Belcastro  
and Laboratorio Monni & C



SEE THE COMPLETE BIBLIOGRAPHY  
ON THE WEBSITE

[WWW.LEONE.IT](http://WWW.LEONE.IT)

# XCN<sup>®</sup>

**FOR NATURAL SMILES ONLY**



**Leone S.p.a.**

Via P. a Quaracchi 50

50019 Sesto Fiorentino | Firenze | Italy

**Export Dept.:**

Phone +39.055.3044600 | Fax+39.055.304405  
export@leone.it | www.leone.it