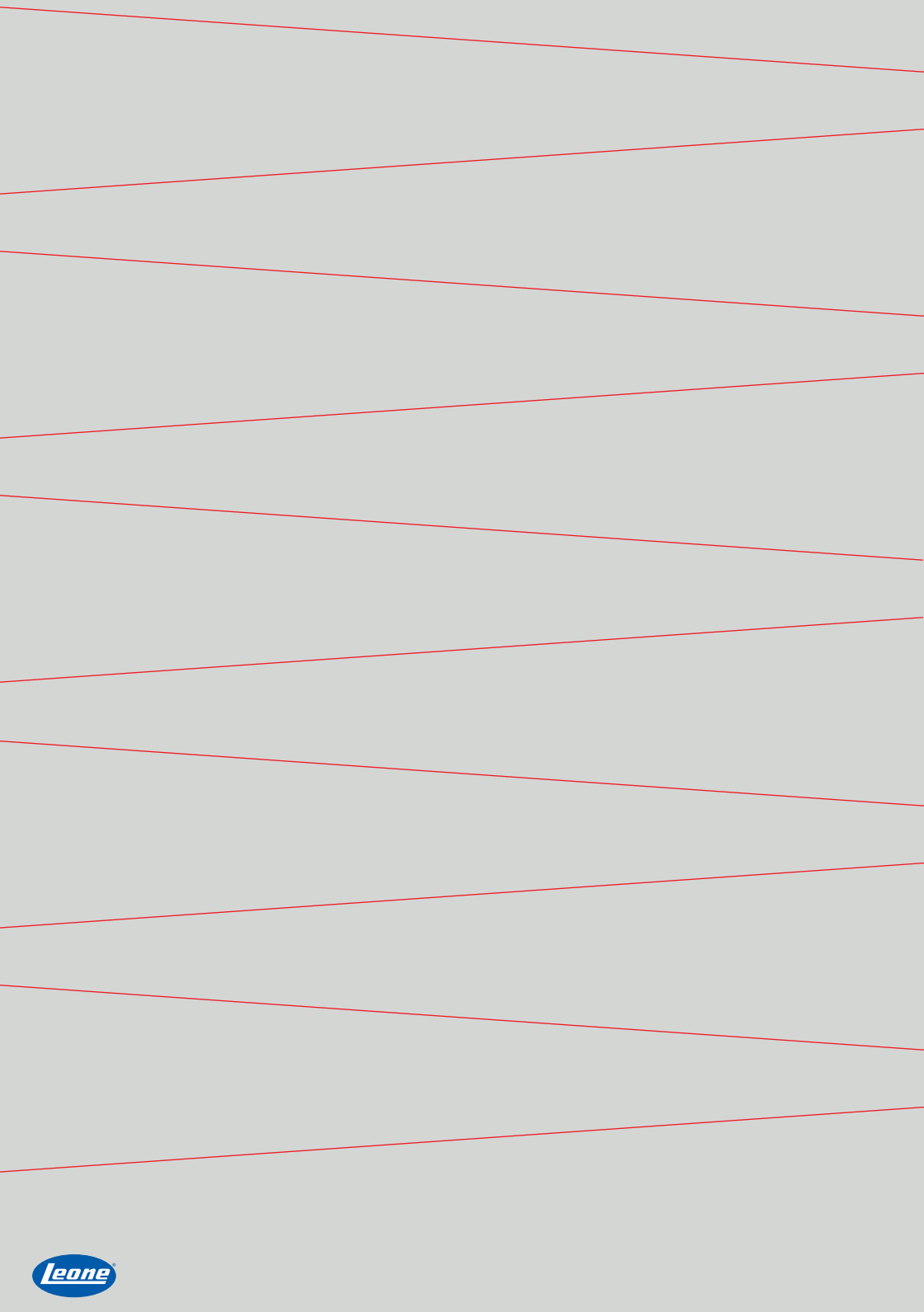


ExaConnect

XCN[®]

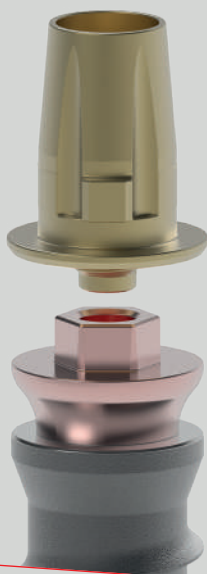




ExaConnect
for single unit screw-retained
prosthesis

ExaConnect

Innovative solution for cement-free screw-retained single crowns



ADVANTAGES

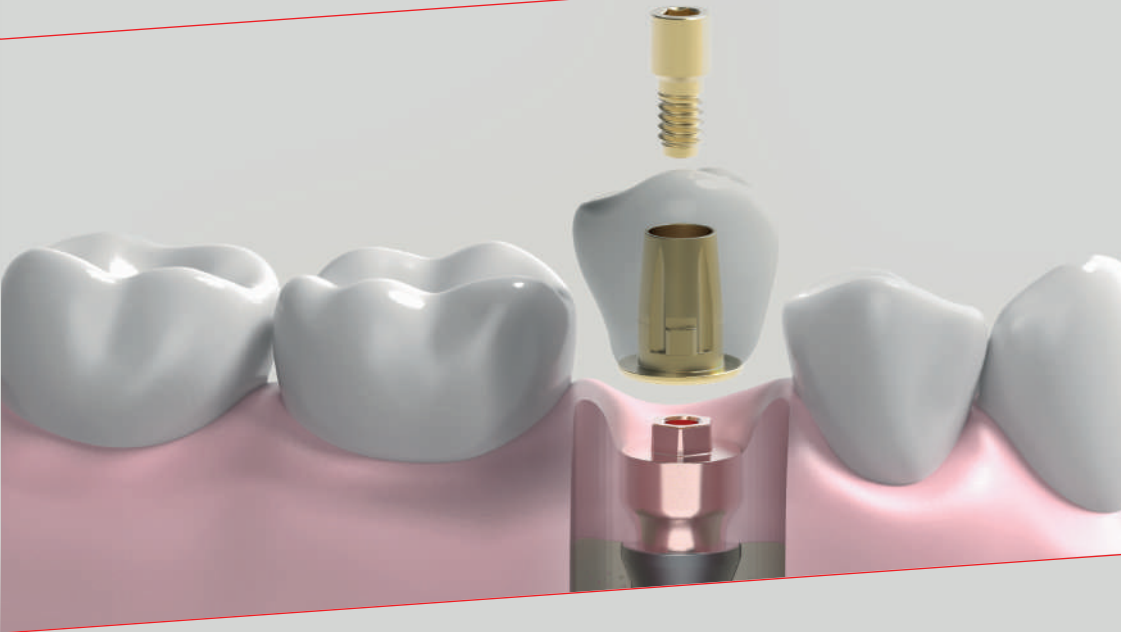
Ideal for a digital workflow: the only Ti-Base abutment with various angulations and gingival heights on the market

In the Plus version, inclined soft tissue conditioning, with improved aesthetic results

Shift of the prosthetic platform from Bone Level to Tissue Level, with simplicity of use and absolute stability provided by the Morse taper connection

One Abutment-One Time Protocol

Soft tissue maintenance during the healing and prosthetic process

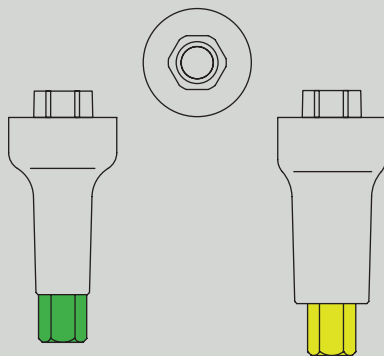


WHEN

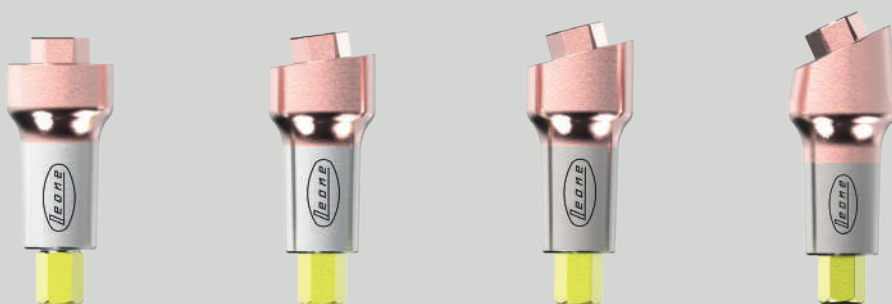
- Single screw-retained crown
- Deep mucosal tunnel
- Transgingival healing (with corresponding healing screw)
- Immediate loading

Features

Top with Perfect Fit external hexagon limiting the possibility of unscrewing



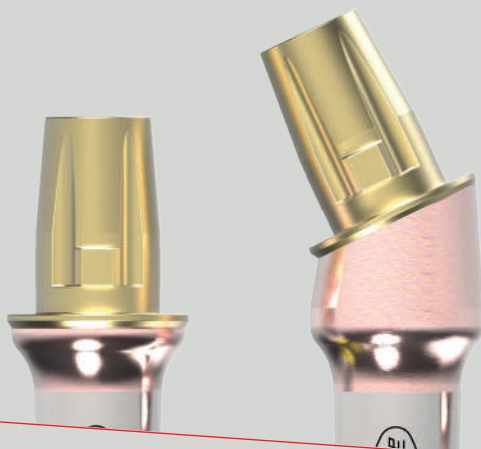
Wide range of angulations (0°, 7.5°, 15°, 25°) and gingival heights, pink anodized to improve aesthetics



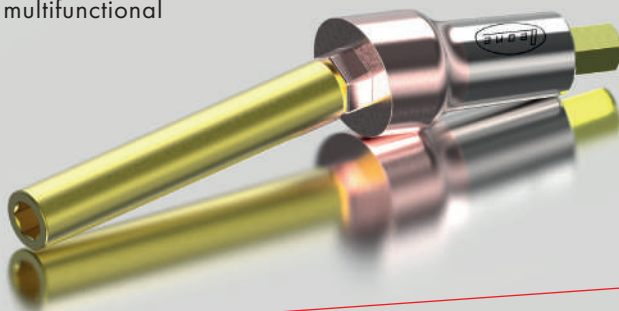
Free positioning of the screw access channel thanks to XCN® 360° connection



Ideal for a fully digital workflow, it becomes a Ti-Base with various angulations and gingival heights



Supplied with pre-mounted multifunctional screw for easy positioning



ExaConnect accessories

The system offers components for both conventional and digital workflows.



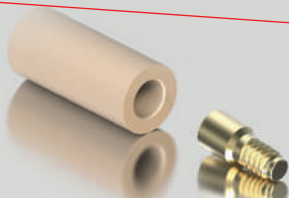
Healing screw

Repositionable and Pick-Up transfer



Lab and Scan Ti-Base

ExaConnect analog



Temporary abutment

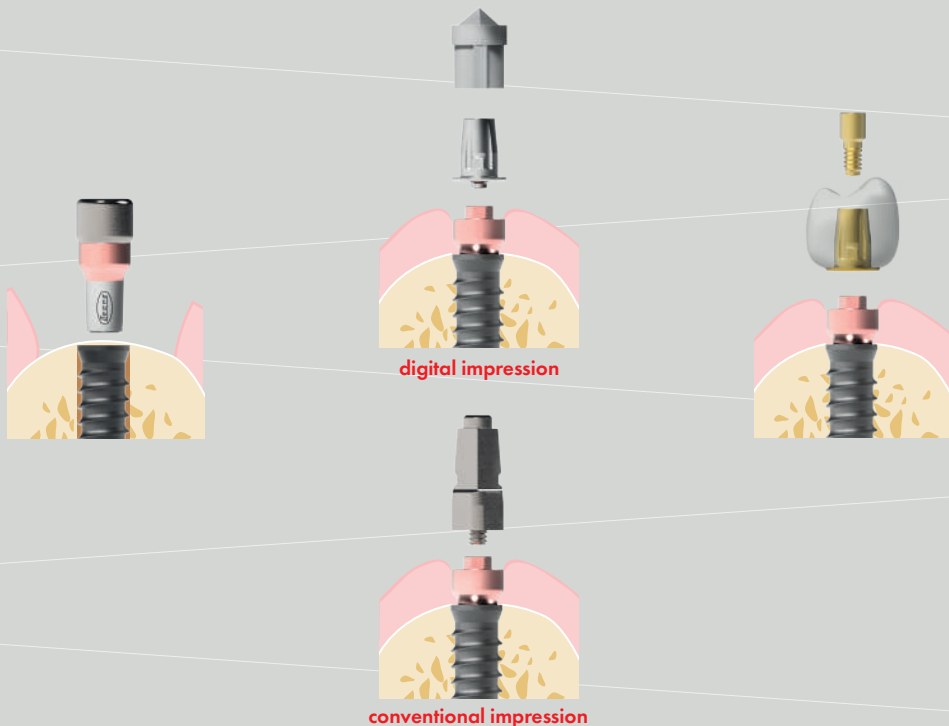
Burn-out coping for Ti-Base



Ti-Base abutment

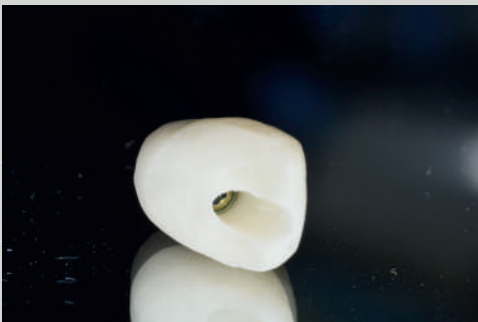
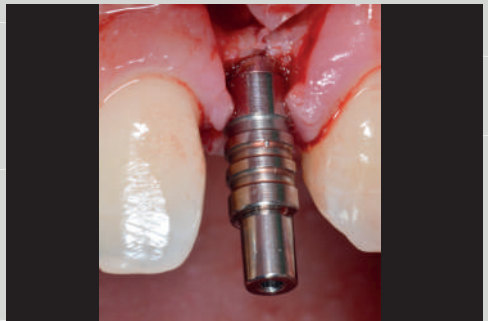
ExaConnect PLUS

Prosthetic line available in sterile version, to optimize the One Abutment-One Time workflow.



- Designed to be inserted immediately after implant placement
- Excellent natural aesthetics due to soft tissue conditioning with the inclination of the chosen connector
- XCN[®] implant plus ExaConnect, the equivalent of a transmucosal implant but with different angulations and gingival heights

Case Report



Courtesy of Dr. Nazario Russo and DT Gerardo Senatore



Courtesy of Dr. Luigi Lucchiari
and Dental Laboratory L.O.R.I.



SEE THE COMPLETE BIBLIOGRAPHY
ON THE WEBSITE

WWW.LEONE.IT



XCN[®]

FOR NATURAL SMILES ONLY



Leone S.p.a.

Via P. a Quaracchi 50

50019 Sesto Fiorentino | Firenze | Italy

Export Dept.:

Phone +39.055.3044620 | Fax +39.055.304405
export@leone.it | www.leone.it