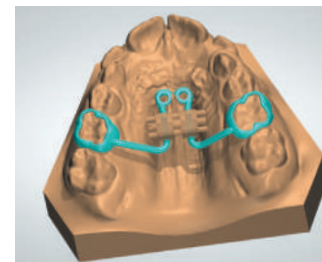


PATENT PENDING

# CAD·CAM

## EXPANDER



**FIRST RPE**  
SCREW SERIES  
DESIGNED FOR A  
**FULL DIGITAL**  
**WORKFLOW**



Orthodontics and Implantology

**Leone S.p.a.**

Via P. a Quaracchi 50  
50019 Sesto Fiorentino | Firenze | Italia

**Export Dept.:**

phone +39 055.3044620 | fax +39 055.304405  
export@leone.it | www.leone.it

IN-05-20



Orthodontics and Implantology

PATENT PENDING

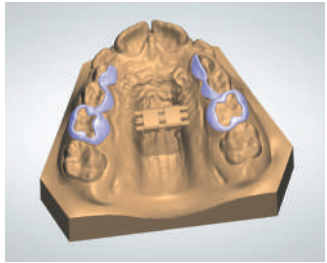
# CAD·CAM EXPANDER

## FIRST RPE SCREW SERIES

DESIGNED FOR A

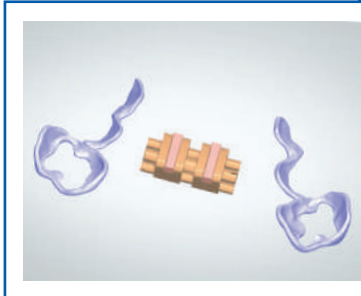
## FULL DIGITAL WORKFLOW

Thanks to almost 50 years of experience in the RPE mechanical manufacturing and the forefront attention to the latest technological innovations introduced in the dental laboratories, Leone is proud to launch the new **CAD CAM RPE**, the first dedicated expander series, that can be included in a fully digital workflow.



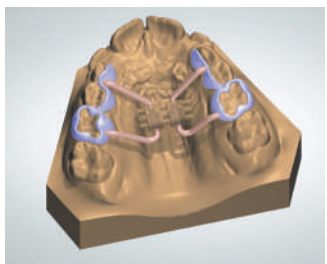
### HIGHLY CUSTOMIZABLE

Teeth Borne, Hybrid and Bone Borne RPEs can be accurately manufactured



### ENHANCED STRENGTH

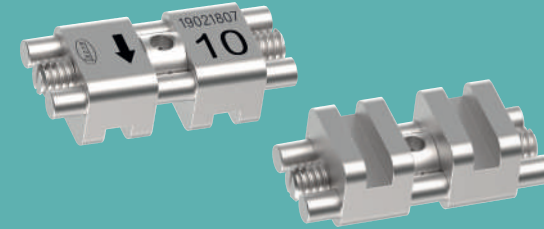
up to more than 50kgf thanks to the male screw material and the self centering guides makes it ideal for MARPE technique



### SQUARED SLOTS

on the screw's bodies for a perfect coupling with the customized framework .stl file of the screws and connecting squared bar along with manufacturing guidelines available

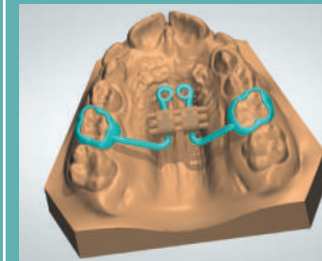
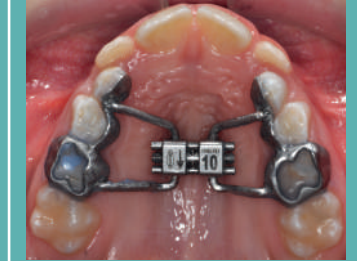
Activation with dedicated **STRENGTHENED SWIVEL KEY**



Courtesy of Prof. L. Franchi - University of Florence

The digital design of the appliance introduces some improvements both for the manufacturing, in terms of time and cost efficiency, and clinically, as it ensures higher accuracy than ordinary methods and better predictability of results.

Made entirely of biomedical stainless steel. The housing design is completely smooth, with no rough areas for a secure hygiene. The expander limit, a directional arrow and the lot number are laser etched into the surface of the expander body. Supplied with a dedicated strengthened activation key and instructions for use to facilitate the patient endoral activation.



The **CAD CAM expander** series looks like a regular expander, but instead of the arms, features squared slots that allow a correct oriented coupling of digitally designed laser sintering framework. Moreover, the male strengthened screw and the self centering guides allow the usage in MARPE appliances.

REF **A0630-08D** ANATOMICAL EXPANDER CAD CAM 8 mm

REF **A0630-10D** ANATOMICAL EXPANDER CAD CAM 10 mm

REF **A0630-12D** ANATOMICAL EXPANDER CAD CAM 12 mm