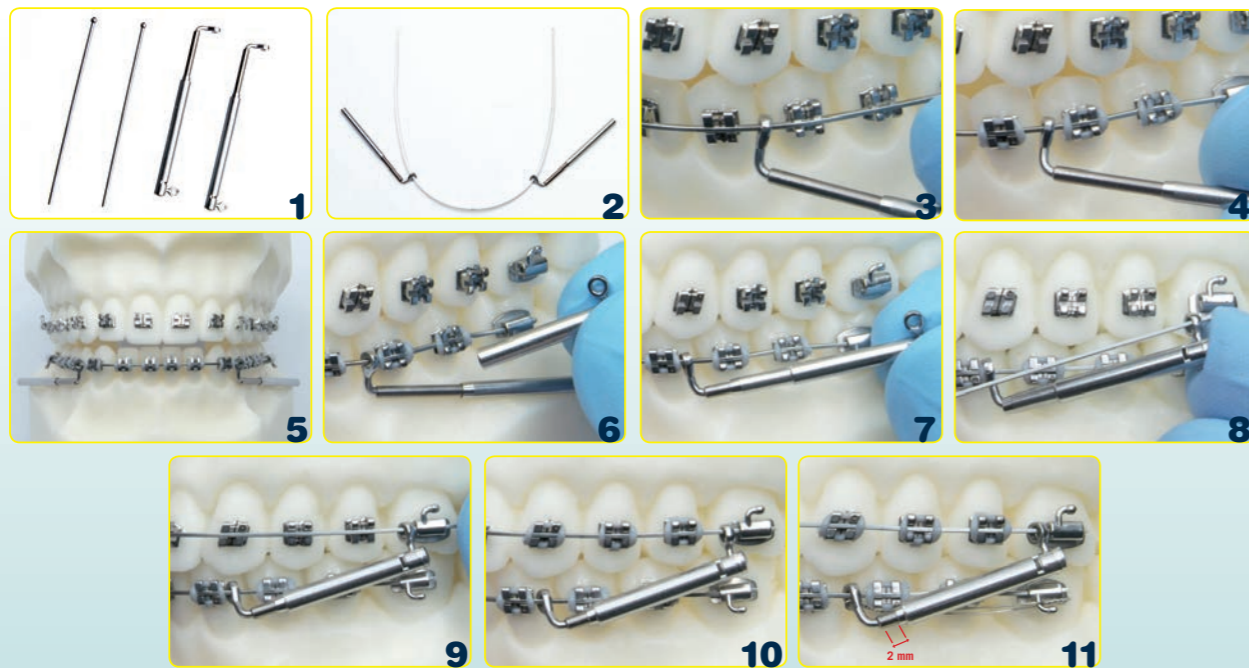
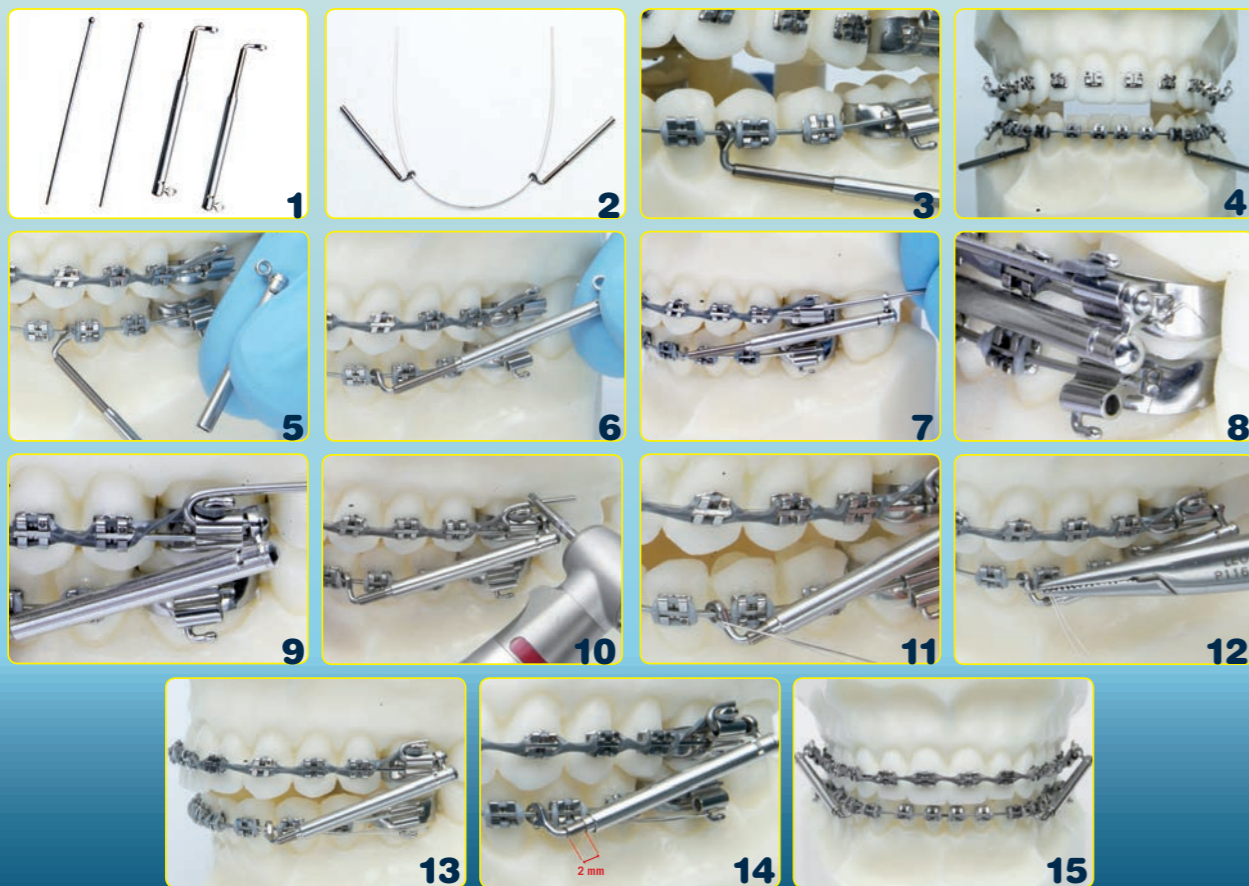


ASSEMBLY PROCEDURE WITH SUPPORT MESIAL TO VESTIBULAR TUBE

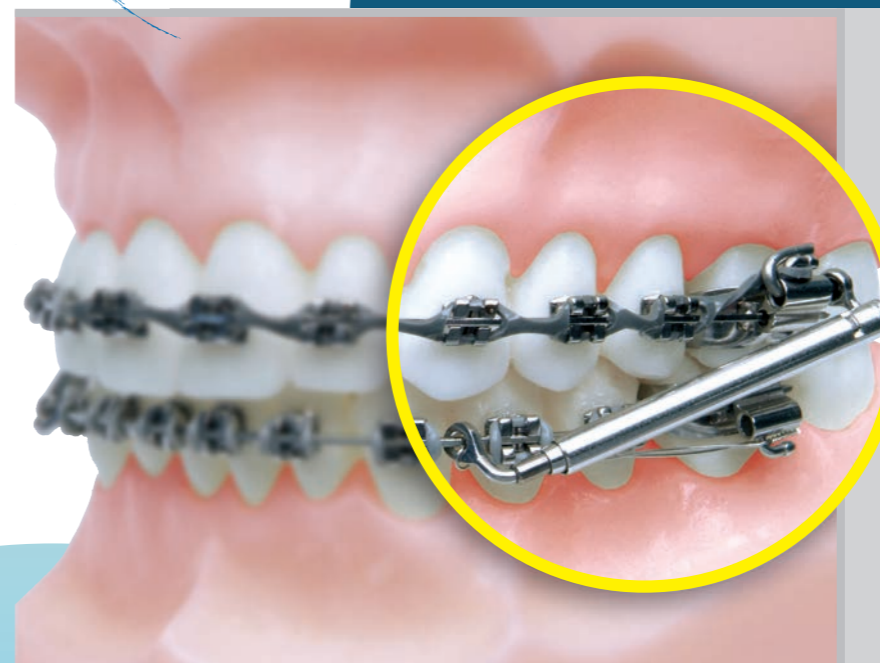


ASSEMBLY PROCEDURE WITH ANCHORAGE DISTAL TO VESTIBULAR TUBE



# LEONE CLASS II CORRECTOR

THE NEW NON-COMPLIANCE DEVICE FOR TREATING CLASS II CASES



The reduction in size and the inner spring provide an optimal patient comfort

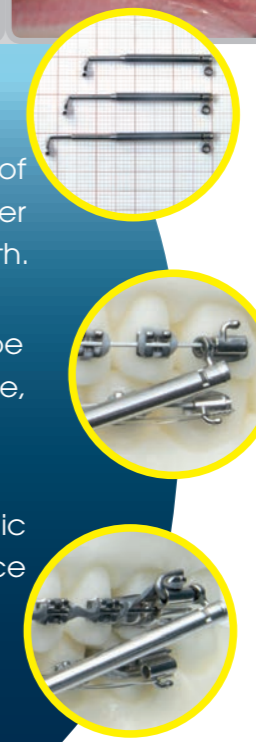


Courtesy of Dr. Ivano Maltoni

There are 3 sizes available with the possibility of either mesial or distal attachment to the upper molar tube, for a total of 6 positions in the mouth.

When utilized in the mesial position, it can be anchored to a direct bonding single tube, without the need for a band or a round tube.

The mandibular advancement is physiologic and it is determined by a continuous light force delivered by the MEMORIA® spring of 200 g.



The packages include all the needful parts for the application of a bilateral corrector

	Type	Length at maximum extension (passive configuration)	Length at maximum spring compression (without 2 mm of further possible compression)	Maximum spring extension	Maximum opening allowed to prevent disassembly
M2300-00	Extra-short	31mm	25mm	7,5mm	48mm*
M2300-01	Short	35mm	28mm	10mm	56mm*
M2300-02	Long	40mm	31mm	10mm	62mm*

\*Distance between the 2 anchorage rings



**LEONE S.p.a. Orthodontics and Implantology**  
 Via P. a Quaracchi, 50 - 50019 Sesto Fiorentino  
 FIRENZE (Italy) - info@leone.it www.leone.it  
**Export sales dept:**  
 Phone: +39.055.3044620 Fax: +39.055.304405  
 E-mail: export@leone.it

IN-08-14