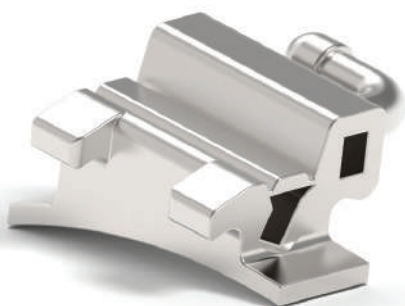
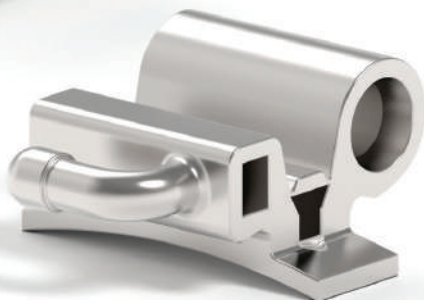
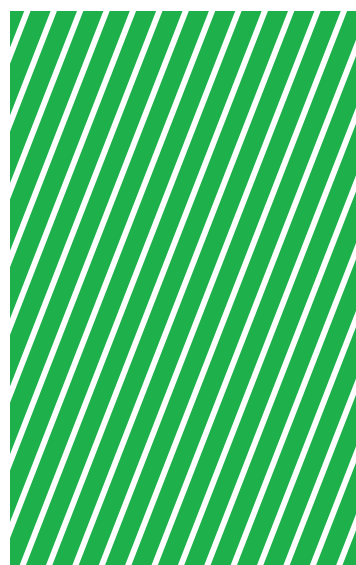


# TUBES AND BRACKETS



**G**



Leone buccal tubes are produced in stainless steel with Metal Injection Moulding technology for absolute precision of the slot size and a special bevelled design for maximum patient's comfort.

Every **MIM**® tube and attachment may be pre welded to either **CALIBRA**® o **WEB** bands with free prewelding service or solder-brazed on the D.B. anatomical mesh pad **MAXI F2800-00**, which is first molar anatomical contoured.

Solder-brazing service is free of charge.

Leone brackets are manufactured from stainless steel with a mechanical micro machine working system to get the highest precision of slots. General tolerance is lower than 3/100. Under edges of tie wings are rounded.

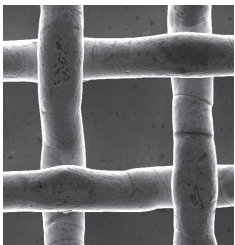
All the Leone brackets may be welded on either **CALIBRA**® ou **WEB** bands with a free prewelding service.



METAL INJECTION MOULDING  
TECHNIQUE  
ALLOWING THE HIGHEST PRECISION OF SLOT



ROUNDED UNDER EDGES  
OF TIE-WINGS  
FOR HIGHER PATIENT COMFORT



FREE PREWELDING AND  
SOLDER-BRAZING SERVICE



**MIM® BUCCAL TUBES**

Every MIM® tube may be pre welded to either CALIBRA® o WEB bands with free prewelding service (page 89) or solder-brazed on the D.B. anatomical mesh pad MAXI F2800-00, which is first molar anatomical contoured (page 138). Solder-brazing service is free of charge. Also available in the direct bonding version upon request (pag. 135).

Pack of 10



Pack of 100 on request

				torque	rect. tube rot.	round tube diam.	retc. tube slot	weldable tubes
<p>auxiliary tube .018"x.025"</p>	6/6 6/6		0°		.045" occl.	.018"	R <b>G8084-22</b> L <b>G8084-23</b>	
						.022"	R <b>G8024-22</b> L <b>G8024-23</b>	
	6/6		0°		.051" occl.	.018"	R <b>G8085-12</b> L <b>G8085-13</b>	
						.022"	R <b>G8025-12</b> L <b>G8025-13</b>	
<p>auxiliary tube .018"x.025"</p>	6/6		-10°	+8°	.045" occl.	.018"	R <b>G8384-22</b> L <b>G8384-23</b>	
						.022"	R <b>G8324-22</b> L <b>G8324-23</b>	
	6/6		-10°	+8°	.051" occl.	.018"	R <b>G8385-12</b> L <b>G8385-13</b>	
						.022"	R <b>G8325-12</b> L <b>G8325-13</b>	
<p>auxiliary tube .018"x.025"</p>	6/6 6/6		0°		.045" ging.	.018"	R <b>G8084-12</b> L <b>G8084-13</b>	
						.022"	R <b>G8024-12</b> L <b>G8024-13</b>	
	6/6		-10°	+8°	.045" ging.	.018"	R <b>G8384-12</b> L <b>G8384-13</b>	
						.022"	R <b>G8324-12</b> L <b>G8324-13</b>	
<p>auxiliary tube .018"x.025"</p>	6/6 6/6		0°			.018"	R <b>G8070-16</b> L <b>G8070-17</b>	
						.022"	R <b>G8010-16</b> L <b>G8010-17</b>	
	6/6		-14°	+8°		.018"	R <b>G8070-02</b> L <b>G8070-03</b>	
						.022"	R <b>G8010-02</b> L <b>G8010-03</b>	
	6/6		-25°	+8°		.018"	R <b>G8070-06</b> L <b>G8070-07</b>	
						.022"	R <b>G8010-06</b> L <b>G8010-07</b>	

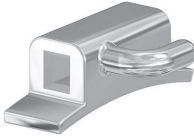









**MIM® BUCCAL TUBES**

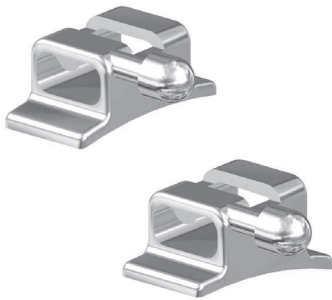
Pack of 10



Pack of 100 on request

				torque	rect. tube rot.	round tube diam.	retc. tube slot	weldable tubes	
	6/6		0°		.045" occl.	.018"	R	<b>G8084-32</b>	
						.022"	L	<b>G8084-33</b>	
	6/6		0°		.051" occl.	.018"	R	<b>G8085-22</b>	
						.022"	L	<b>G8085-23</b>	
	6/6		-10°	+8°	.045" occl.	.018"	R	<b>G8384-32</b>	
						.022"	L	<b>G8384-33</b>	
	6/6		-10°	+8°	.051" occl.	.018"	R	<b>G8385-22</b>	
						.022"	L	<b>G8385-23</b>	
		6/6		0°		.045" ging.	.018"	R	<b>G8084-02</b>
							.022"	L	<b>G8084-03</b>
		6/6		0°		.051" ging.	.018"	R	<b>G8085-02</b>
							.022"	L	<b>G8085-03</b>
6/6			-10°	+8°	.045" ging.	.018"	R	<b>G8384-02</b>	
						.022"	L	<b>G8384-03</b>	
6/6			-10°	+8°	.051" ging.	.018"	R	<b>G8385-02</b>	
						.022"	L	<b>G8385-03</b>	
6/6			-25°	+8°	.045" ging.	.018"	R	<b>G8384-06</b>	
						.022"	L	<b>G8384-07</b>	
6/6			-25°	+8°	.051" ging.	.018"	R	<b>G8385-06</b>	
						.022"	L	<b>G8385-07</b>	

					torque	rect. tube rot.	round tube diam.	ret. tube slot	weldable tubes
	7 6 6 7 7 6 6 7	  	0°				.018"	R <b>G8081-02</b> L <b>G8081-03</b>	
							.022"	R <b>G8021-02</b> L <b>G8021-03</b>	
	7 6 6 7	  	-10° +8°					.018"	R <b>G8381-02</b> L <b>G8381-03</b>
								.022"	R <b>G8321-02</b> L <b>G8321-03</b>
								.022"	R <b>G8321-12</b> L <b>G8321-13</b>
									R <b>G8321-16</b> L <b>G8321-17</b>
	7 6 6 7	  	-25° +8°					.018"	R <b>G8381-06</b> L <b>G8381-07</b>
								.022"	R <b>G8321-06</b> L <b>G8321-07</b>



**MIM® LINGUAL TUBE WITH BALL HOOK**

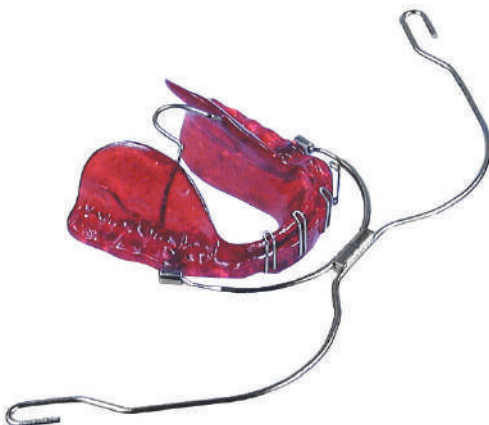
- G2846-02** Right
- G2846-03** Left
- G2847-02** Right, rotation -8°
- G2847-03** Left, rotation -8°

The curved flanges adapt to contours of both first and second molars. For use with double wires: .036".  
**Pack of 10**











**MIM® ACTIVATOR TUBE FOR EXTRAORAL FACEBOW**

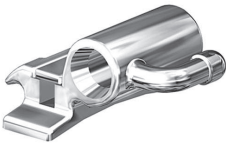
Manufactured with Metal Injection Moulding technology, it allows high retention into acrylics. Comfortable bevelled design.  
**Pack of 10**

- A0761-45** ∅ .045"
- A0761-51** ∅ .051"





			torque	rect. tube rot.	round tube diam.	rect. tube slot	weldable tubes		
6/6		0°			.045" ging.	.018"	R L	<b>G8184-02</b> <b>G8184-03</b>	
						.022"	R L	<b>G8124-02</b> <b>G8124-03</b>	
		0°				.051" ging.	.018"	R L	<b>G8185-02</b> <b>G8185-03</b>
							.022"	R L	<b>G8125-02</b> <b>G8125-03</b>
	6/6		-10°	+8°		.045" ging.	.018"	R L	<b>G8484-02</b> <b>G8484-03</b>
							.022"	R L	<b>G8424-02</b> <b>G8424-03</b>
6/6		-10°	+8°		.051" ging.	.018"	R L	<b>G8485-02</b> <b>G8485-03</b>	
						.022"	R L	<b>G8425-02</b> <b>G8425-03</b>	
6/6		-25°	+8°		.045" ging.	.022"	R L	<b>G8424-16</b> <b>G8424-17</b>	
						.018"	R L	<b>G8484-06</b> <b>G8484-07</b>	
						.022"	R L	<b>G8424-06</b> <b>G8424-07</b>	
6/6		-25°	+8°		.051" ging.	.018"	R L	<b>G8485-06</b> <b>G8485-07</b>	
						.022"	R L	<b>G8425-06</b> <b>G8425-07</b>	
6/6		0°				.018"	R L	<b>G8181-02</b> <b>G8181-03</b>	
						.022"	R L	<b>G8121-02</b> <b>G8121-03</b>	
6/6		-10°	+8°			.018"	R L	<b>G8481-02</b> <b>G8481-03</b>	
						.022"	R L	<b>G8421-02</b> <b>G8421-03</b>	
6/6		-20°	+8°			.022"	R L	<b>G8421-16</b> <b>G8421-17</b>	
						.018"	R L	<b>G8481-06</b> <b>G8481-07</b>	
6/6		-25°	+8°			.022"	R L	<b>G8421-06</b> <b>G8421-07</b>	



**P1090-00**  
**CAP REMOVER**  
**FOR CONVERTIBLE TUBES**

\*\*\*

It makes the conversion of rectangular tube easy when banding of second molar is required. Autoclavable. Replaceable tips **P1090-01**, 2 pcs.



## WELDABLE BRACKETS

Pack of 10



Pack of 100 on request



### UPPER

		torque	ang.	mm	slot .018"	slot .022"		
<b>2   1   2</b>								
			0°	2,5	R	<b>G2080-14</b>	<b>G2020-14</b>	
			0°	3,3	R	<b>G2080-34</b>	<b>G2020-34</b>	
<b>1   1</b>								
			0°	3,5	R	<b>G2086-14</b>	<b>G2026-14</b>	
			0°	4,4	R	<b>G2080-44</b>	<b>G2020-44</b>	
			+10°	+5°	3,3	R		<b>G2421-02</b> <b>G2421-03</b>
			+22°	0°	3,3	R	<b>G2480-04</b>	
<b>2   2</b>								
			0°	2,7	R	<b>G2080-24</b>	<b>G2020-24</b>	
			+5°	+10°	2,7	R		<b>G2422-02</b> <b>G2422-03</b>
			+14°	+8°	2,7	R	<b>G2482-02</b> <b>G2482-03</b>	
<b>3   3</b>								
			0°	2,5	R	<b>G2080-14</b>	<b>G2020-14</b>	
			0°	2,7	R	<b>G2088-04</b>	<b>G2028-04</b>	
			0°	3,3	R	<b>G2088-14</b>	<b>G2028-14</b>	
			+7°	+5°	3,3	R	<b>G2483-08</b> <b>G2483-00</b>	
			-10°	+10°	3,3	R		<b>G2423-02</b> <b>G2423-03</b>
			-10°	+15°	3,3	R		<b>G2423-12</b> <b>G2423-13</b>
<b>5 4   4 5</b>								
			0°	2,7	R	<b>G2088-04</b>	<b>G2028-04</b>	
			0°	3,3	R	<b>G2088-34</b>	<b>G2028-34</b>	
			-7°	0°	3,3	R	<b>G2484-05</b>	
			-15°	0°	3,3	R	<b>G2485-05</b>	
			0°	2,0	R	<b>G2089-14</b>	<b>G2029-14</b>	
			0°	3,3	R	<b>G2084-01</b>	<b>G2024-01</b>	
			-17°	0°	3,3	R	<b>G2489-15</b>	<b>G2429-15</b>
			-22°	0°	3,3	R	<b>G2489-05</b>	<b>G2429-25</b>
<b>6   6</b>								
			0°	3,5	R	<b>G2086-14</b>	<b>G2026-14</b>	
			0°	4,4	R	<b>G2080-44</b>	<b>G2020-44</b>	



### LOWER

		torque	ang.	mm	slot .018"	slot .022"		
<b>2   1   2</b>								
			0°	2,0	R	<b>G2080-04</b>	<b>G2020-04</b>	
			0°	2,1	R	<b>G2080-05</b>	<b>G2020-05</b>	
<b>3   3</b>								
			0°	2,5	R	<b>G2080-14</b>	<b>G2020-14</b>	
			0°	2,7	R	<b>G2088-04</b>	<b>G2028-04</b>	
			0°	3,3	R	<b>G2088-14</b>	<b>G2028-14</b>	
			+7°	+5°	3,3	R	<b>G2483-00</b> <b>G2483-08</b>	
			-10°	+5°	3,3	R		<b>G2423-06</b> <b>G2423-07</b>
			-10°	+10°	3,3	R		<b>G2423-16</b> <b>G2423-17</b>
<b>5 4   4 5</b>								
			0°	2,7	R	<b>G2088-04</b>	<b>G2028-04</b>	
			0°	3,3	R	<b>G2088-34</b>	<b>G2028-34</b>	
			-7°	0°	3,3	R	<b>G2484-05</b>	
			-15°	0°	3,3	R	<b>G2485-05</b>	
			0°	2,0	R	<b>G2089-14</b>	<b>G2029-14</b>	
			0°	3,3	R	<b>G2084-01</b>	<b>G2024-01</b>	
			-17°	0°	3,3	R	<b>G2489-15</b>	<b>G2429-15</b>
			-22°	0°	3,3	R	<b>G2489-05</b>	<b>G2429-25</b>
<b>6   6</b>								
			0°	3,5	R	<b>G2086-14</b>	<b>G2026-14</b>	
			0°	4,4	R	<b>G2080-44</b>	<b>G2020-44</b>	

suggested for Andrews system  
 suggested for Ricketts system



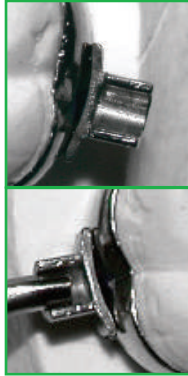
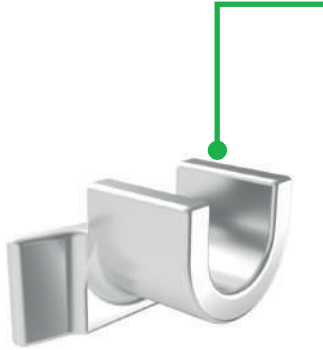


**CONNECTORS FOR LASER WELDING**

Connectors for laser welding are accessories to be welded on the lingual side of the bands. Manufactured with **MIM®** technology, they feature a special fit geometry allowing the hold of the wire or the arm of the expander for laser welding of elements with a different thickness. The three models allow to make expanders, palatal bars and quad-helix with safety and solidity of the welded joints.

**Pack of 10**

**G0560-00  
CONNECTOR  
FOR EXPANDERS**



CONNECTOR'S FLANGES ENSURE A GOOD JOINT TO THE BAND BY MEANS OF A WELDING MACHINE

CONNECTOR'S SHAPE ENABLES A CORRECT BIOMECHANICAL POSITION OF THE ARM AND THE HYGIENE OF THE AREA

**G0565-09  
CONNECTOR 0,9 MM  
FOR BICUSPIDS**



LASER WELDED CONNECTOR MECHANIC RESISTANCE AND STAINLESSNESS ARE GUARANTEED

**G0570-09  
CONNECTOR 0,9 MM  
FOR MOLARS**



DETAIL OF THE WIRE HOUSING INTO THE CONNECTOR'S SEAT

**ROUND  
TUBES**



mm	pkg.
.036" 6,5	<b>G0533-36</b>
.045" 5,5	<b>G0532-45</b> 10
.045" 9,5	<b>G0535-45</b>

**ROUND  
TUBING**



mm	pkg.
.036"	<b>G0525-36</b> 1 pc 30 cm long
.045"	<b>G0525-45</b>

**TWIN ARCH  
SYSTEM TUBES**

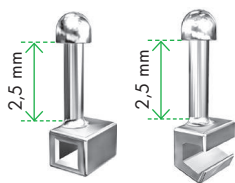
**Pack of 10**



**G0520-24**  
Length 28,6 mm  
For double wire .011".  
Outer diameter: .036".



**G0533-36**  
For soldering.  
Inner diameter .036".

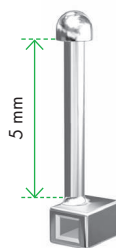


**MIM® SURGICAL HOOKS**

For intermaxillary post-surgical fixation and tractions. Round edges. Easy to place with plier P1911-00.

mm	for arch .018"	for arch .022"	pkg.
2,0	<b>G9620-18</b>	<b>G9620-22</b>	10
2,0 open	<b>G9650-18</b>	<b>G9650-22</b>	

**G9019-25 CRIMPABLE CLOSED HOOK**



For treatment with STEP technique, it is used for the application of intra and extraoral forces on .019"x.025" archwires in extra spring hard or super hard heat-treated stainless steel. Crimp it with a large cutter or P1911-00 plier. **Pack of 10**

**LINGUAL BUTTONS**

Pack of 10



**G2860-00**  
Flat for centering on molars



**G2865-00**  
Curved for mesial placement on molars



**G2870-00**  
Deep curved for bicuspid

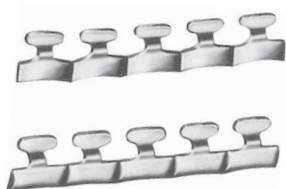


**CRIMPABLE ARCH STOP**

It can be inserted without removing the archwire. Once placed into the mouth, crimp it with a heavy cutter or universal pliers. Suggested for use with coil springs too. **Pack of 10**

**G9225-18**  
for arches .018"x.025"

**G9228-22**  
for arches .022"x.028"



**ELASTIC LUGS**

Pack of 100

**G2893-00**  
Curved for posteriors

**G2890-00**  
Flat for anteriors



**LINGUAL CLEATS LOW PROFILE**

Pack of 100

**G2824-00**  
For molars

**G2822-00**  
For cuspids and bicuspid



**G2810-00 EYELET**

Pack of 100



**G2820-00 LINGUAL CLEATS HIGH PROFILE**

Pack of 100



**G2850-00 LINGUAL SEATING LUGS**

Pack of 100